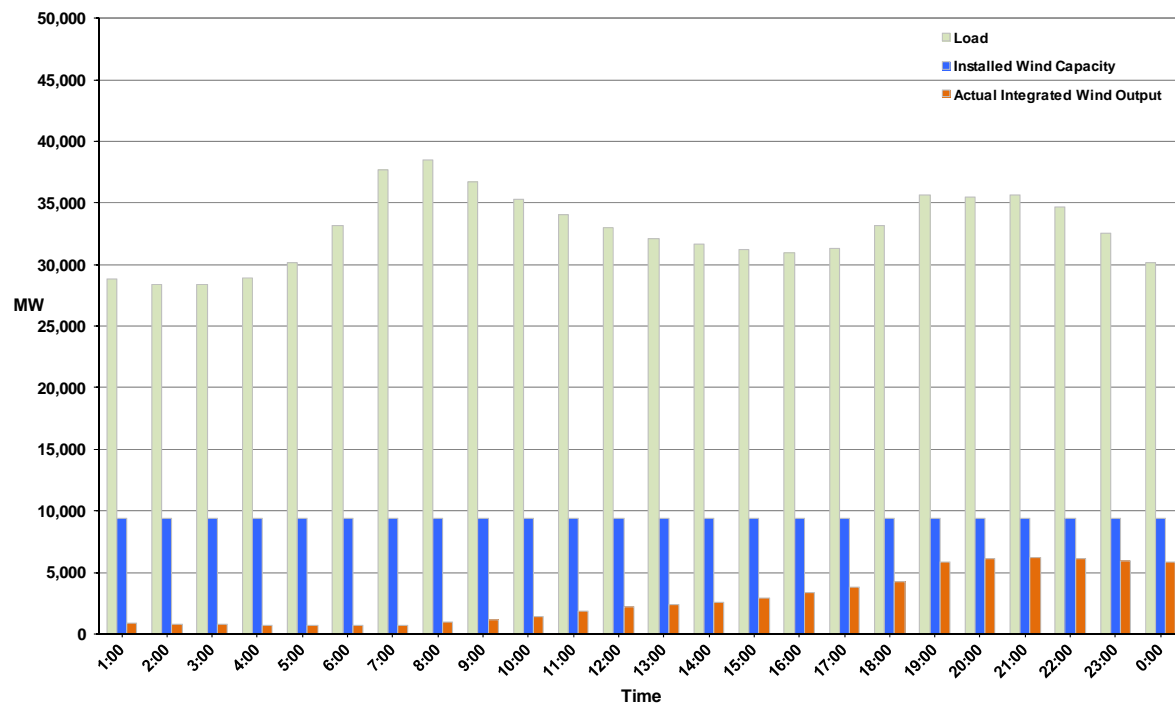




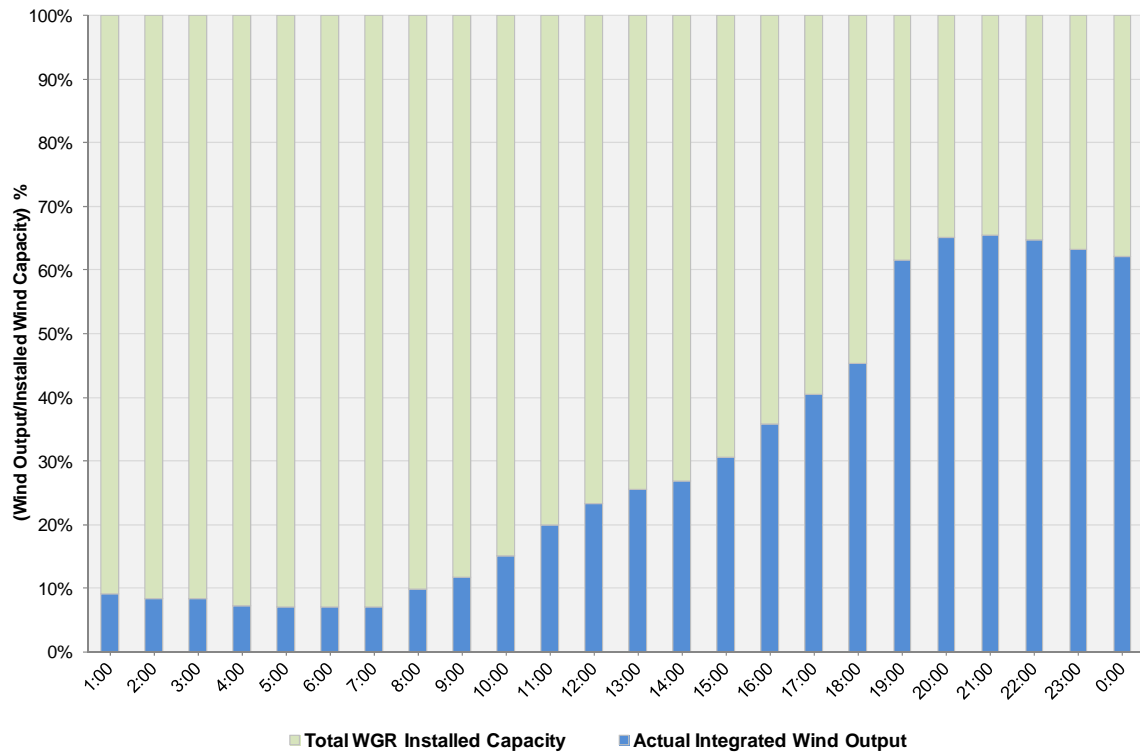
ERCOT Grid Operations Wind Integration Report: 11/30/11

Peak Load	38,490 MW
Load Peak Hour	08
Wind over Peak	934 MW
Wind Record 10/07/11	7,400 MW
Max Wind Value	6,362 MW
Wind Peak Time	21:57
Wind Integration %	18.79%

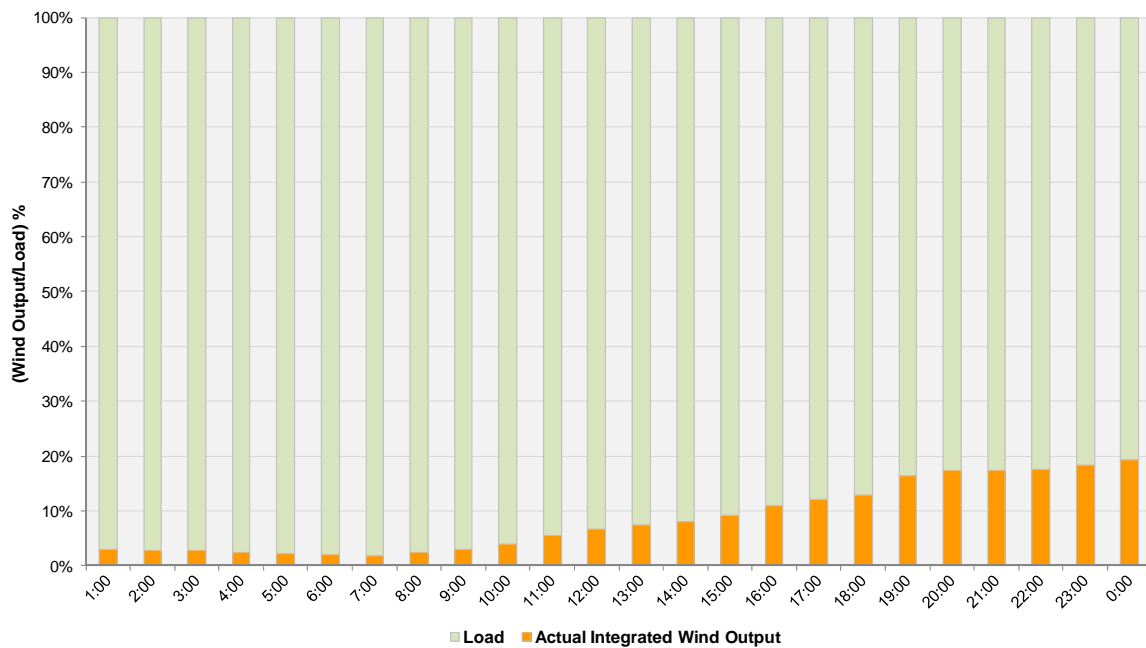
Hourly Average Actual Load vs. Actual Wind Output
11-30-2011



Actual Wind Output as a Percentage of the Total Installed Wind Capacity
11-30-2011



Actual Wind Output as a Percentage of the ERCOT Load
11-30-2011



ERCOT Load vs. Actual Wind Output 11/23/2011 - 11/30/2011

